



Wongutha CAPS

CHRISTIAN ABORIGINAL PARENT-DIRECTED SCHOOL

PO Box 101 Gibson WA 6448

Ph: (08) 90754011 Fax: (08) 90754019

admin@wonguthacaps.wa.edu.au

Location 625 Lot 3 Gibson East Road Gibson WA 6448

Bushfire Management Flowchart Fire Danger Warning

Preparation Strategies:

Summer Preparation

- Equipment Check
- Grounds Maintenance e.g. slashing, grass cut short to less than 10cm
- Teacher PD on Bushfire Management
- Timed evacuation drills practiced
- Buses maintained and fuelled ready for evacuation
- Fire extinguishers marked on map
- Fire trailer filled and maintained
- Removal of fuel loading underneath tree lines in driveway

Refuge

- Sprinklers / gutter plugs set up and ready
- Independent power source ready
- Water source and delivery system
- Verandas swept and kept clear from debris
- Buckets, mops, blankets and hoses on ready

Fire Warning

Place fire defence equipment at safe refuge

Place fire defence equipment at safe refuge

Severe/Extreme

Catastrophic

Fire Watch Protocols

- Radio (Local & FESA) on the hour
- Watch Horizon
- Prepare Refuge
- All staff and students to be on campus

Please see following page for continuation of flowchart. To be commenced from "Catastrophic".

Bushfire Management Flowchart
Fire Danger Warning

Catastrophic

Declared On Day

Declared Day Before

Fire Watch Protocols

- Radio (Local & FESA) on the hour
- Watch Horizon
- Prepare Refuge
- All staff and students to be on campus

Fire Watch Protocols

- Radio (Local & FESA) on the hour
- Watch Horizon
- Prepare Refuge
- All staff And students to be on campus

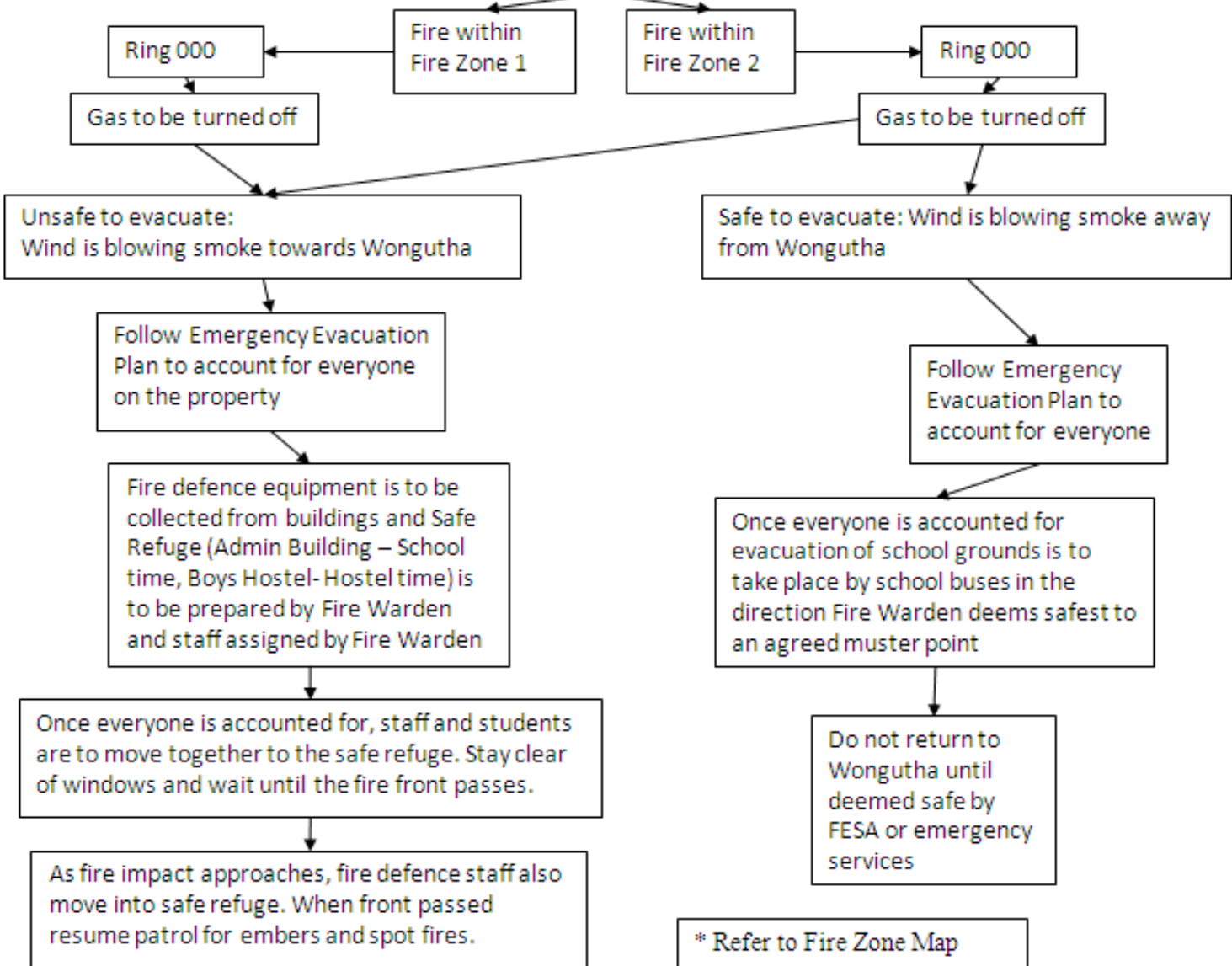
Decision to evacuate made by Principal and Fire Warden or in Hostel time made by Hostel Supervisors and Hostel Fire Warden ASAP on receiving notice

Bushfire Management Flowchart

Fire on Horizon

- Preparation Strategies:
- Summer Preparation
- Equipment Check
 - Grounds Maintenance e.g. slashing, grass cut short to less than 10cm
 - Teacher PD on Bushfire Management
 - Timed evacuation drills practiced
 - Buses maintained and fuelled ready for evacuation
 - Fire extinguishers marked on map
 - Fire trailer filled and maintained
 - Removal of fuel loading underneath tree lines in driveway
- Refuge
- Sprinklers / gutter plugs set up and ready
 - Independent power source ready
 - Water source and delivery system
 - Verandas swept and kept clear from debris
 - Buckets, mops, blankets and hoses on ready

Fire on Horizon



Bushfire Management

Wongutha CAPS is located in a rural area, the school itself is surrounded by light fuel being mainly a grazing and cropping area. Several buildings on the western school boundary are at some risk due to a row of pine trees; however the remaining areas of the school are at low to moderate risk as determined in consultation with a FESA representative. Within the school grounds grass is always kept cut short and appropriate summer preparation is done as outlined on flowcharts.

Wongutha CAPS is committed to the safety of students and staff at both the school and hostel. In the event of a bushfire please refer to the Bushfire Management flowchart for a Fire on Horizon and Fire Danger Warning.

Useful information:

Fire Warden: Tim Ross

In the event of the Fire Warden being unavailable when there is a threat of bushfire or a severe to catastrophic Fire Danger Warning, another Fire Warden will be nominated from the Wongutha Bushfire Management Team below to co-ordinate emergency procedures. The Fire Warden is responsible for the implementation of the summer preparation as outlined on the Bushfire Management Flowcharts.

Tim Ross is a long standing staff member at Wongutha CAPS and a member of a local Fire Brigade. He carries his "fire phone" on him at all times and is currently in charge of Fire Management. He has extensive training and experience in fire management.

Wongutha CAPS Bushfire Management Team

- Tim Ross – Fire Warden (Captain of local Fire Brigade)
- Neil Sommerville – Grounds Manager
- Kris Nostrini – Maintenance Manager
- Luke Rickerby – Boarding Manager
- Shane Meyer – School Principal
- Graham Rickerby – Wongutha Farm Manager (Member of local Fire Brigade)

This team works collaboratively to minimise the risks of fire to Wongutha students, staff and property while also working together in the event of an actual fire emergency or threat.